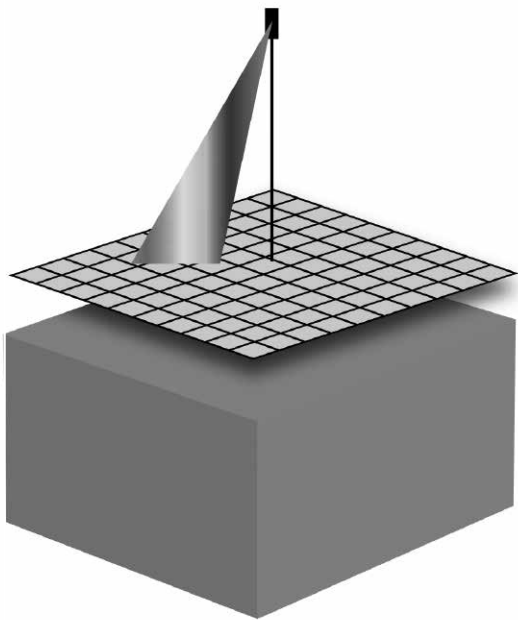


DEVICES AND MATERIALS FOR
TERRESTRIAL PERCEPTION
AND UTILIZATION



AKV BERLIN. STRATAGRIDS. 2012.

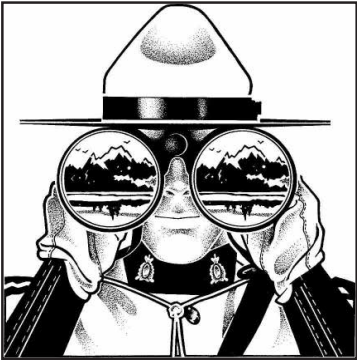
DEVICES AND MATERIALS
FOR TERRESTRIAL PERCEPTION
AND UTILIZATION

AKV BERLIN. STRATAGRIDS. 2012.

M.S.

If you measure it,
you turn it into something else.

J.C. Sand



Binoculars

An instrument for seeing things
from far away as if they were
nearby.



**Donald Trump With The Model
Of Trump City**

The visualization of a potential
future. Final touch for proof
before realization.



Kaiser Community Homes Plywood Test

Shooting plywood was intended to demonstrate the material's strength and safety for residential construction.



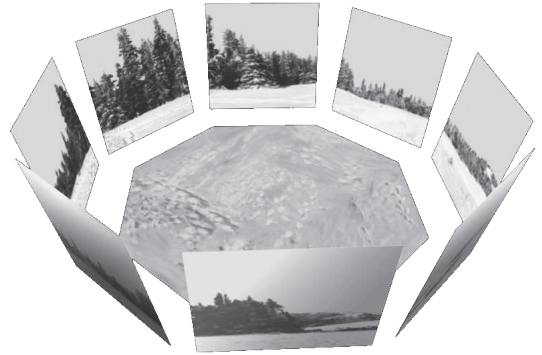
**Dinosaur Skull Inside Building
Material**

Former live encased in
architecture.



Tropical Island

The indoor resort includes a rainforest, beach, artificial sun, palm trees, orchids, and bird songs. Recordings of natural rainforests are broadcast from speakers disguised as rocks or other natural features.



Multi-sensory Digital Screens

Developed for military training.
A 360° screen with surround
sound as well as smell
simulations, including burning
charcoal.



Street View

Specially adapted cars supplied with nine directional cameras for 360° views to produce a virtual reflection of the real world to enable armchair exploration.



Scenic Wallpaper

Scenic wallpaper is one aspect of interior decoration. Having an urban (or rural) outside feeling while being situated inside.



Deceptive Landscape Painting

Road Runner has the ability to enter the painted image of a road, while the coyote cannot. Sometimes, however, this is reversed, and the Road Runner can burst through a painting while the coyote cannot.



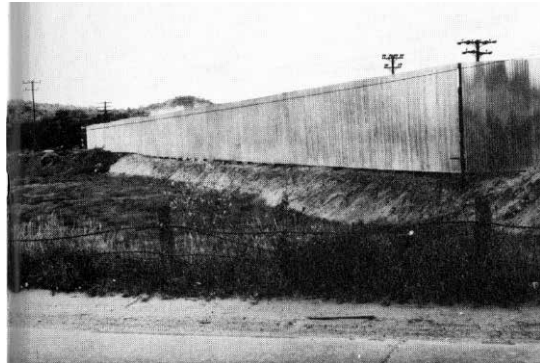
The Three Layer Logic

1. The image of a real site.
 2. The viewing site for the real site.
 3. The real site.
- Seeing the image of the real site
and going to the real site to see
the real site from the viewing site.



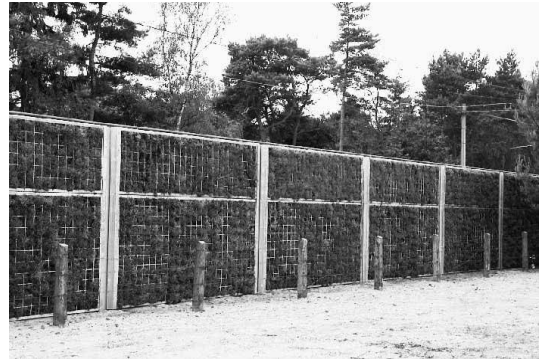
Blank Plaque Display

Inspired by empty plaques,
billboards and street signs.
Actual working display that
refers to a section of the wall
behind it.



A Fence And A Better Fence

Inaccessible structures,
accessible designs. (The better
fence is in the background while
the fence is in the foreground.)



**Soundproof Wall
Model: Square Trees**

Integrating nature within
soundproof walls for visual
soothing of affected
communities.



Deceptive Murals

Tropical themed mural with correspondent actual horticulture creates a subtropical ambiance in a temperate zone.



Pulling A House

Moving one's house to follow fish population onto increasingly remote grounds was a long established practice.



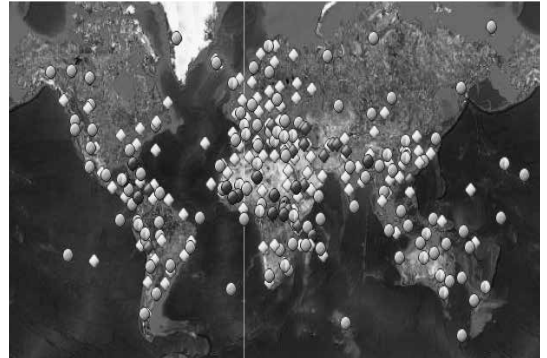
Arrows In Landscapes

Though intended to work as an orientation assisting device, graphic arrows can also be inaccurate and therefore misleading. The “you are here” arrows are often the subject of complaints.



The Sedan Crater

The Sedan Crater is the largest man-made crater (with the help of a nuclear detonation) in the US, and is listed on the National Register of Historic Places. The sheer size of the crater gives it its historical significance.



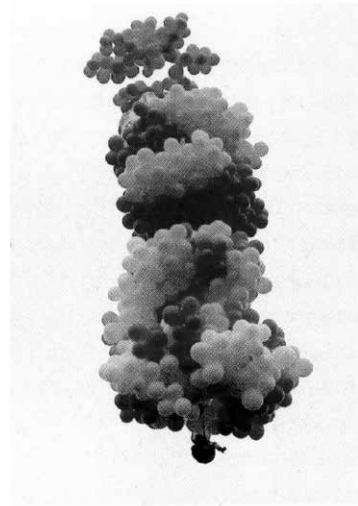
The World Heritage List

Includes currently 944 properties which the World Heritage Committee considers as having outstanding universal value. The number of properties is ever growing.



The Happiest Place On Earth

Dedicated to the ideals, the dreams, and the hard facts that have created America, with the hope that it will be a source of joy and inspiration to all the world.



Great Heights

Great heights allow humans to visualize and sense the Earth's surface from above, and therefore enable an unusual perspective.



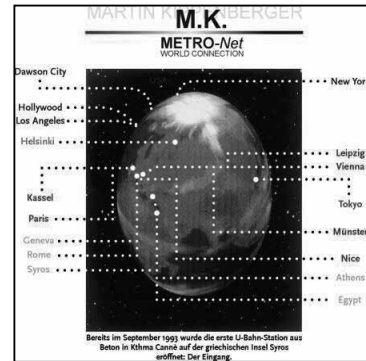
James R. Benning

Getting a sense of place with the help of his acoustic-hand-trick.



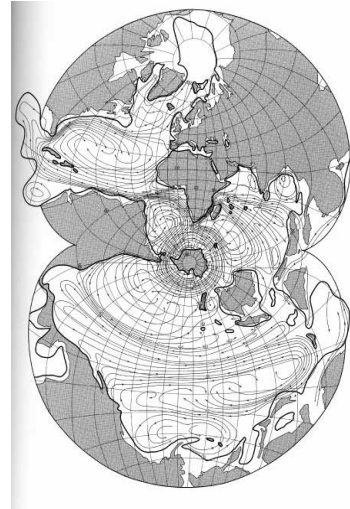
Underwater Metal Detection

Police forces, harbor authorities, and scrap or treasure hunters use this tool to localize lost or purposefully plunged metallic material that sits on or below the river floor.



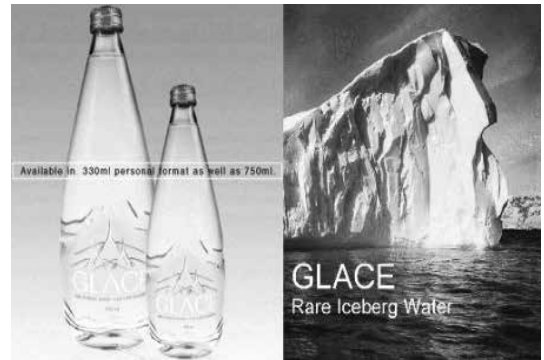
Metro-Net

M. Kippenberger planned a global underground metro system and started to construct entrances to it in different cities around the world.



August Projection Of World Ocean Map (1942)

Coconuts can indicate ocean currents. Their buoyancy gives them the ability to ride the ocean currents outside the bounds of human laws and restrictions.



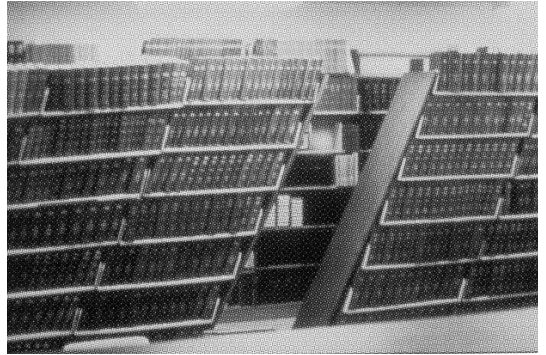
Rare Iceberg Water

Melted iceberg going for \$10 a bottle.



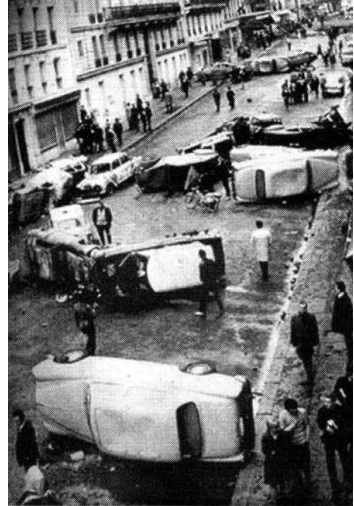
Heritage Smell

A chemist tries to identify decay in its earliest stages. Working on a handheld mass spectrometer, a sort of artificial nose that locates the molecules that cause the musty smell of paper in libraries.



Seismically Active Libraries

Books are earthquake detectors. They are able to show the intensity of an earthquake by ways of falling in high or low quantity.



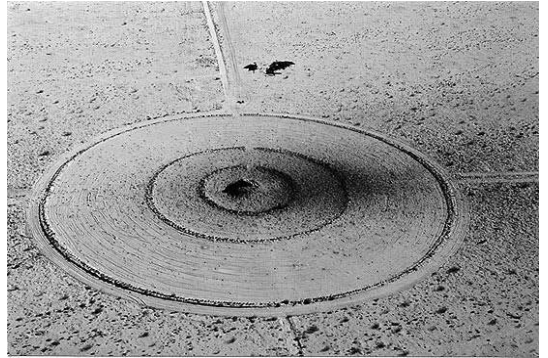
Barricades

Overtured cars used as makeshift barricades.
Moveable structures turned into immovable structures in order to stop opponents' moves.



Tire Cairns Slab City

To aid in navigation, homemade cairns have been built at various intersections and turn-outs, as no paved roads, no street signs and few distinctive landmarks are present in a desert landscape.



Navy Target

Practice target used by the Navy and Air Force. Each target is approximately 300-feet across, and consists of concentric circles, made of dirt and old tires, that surround a central “bulls-eye” mound. The targets are struck with inert practice bombs and strafed with 20 mm and 50 caliber machine gun fire.

The Modified Mercalli Scale

<p>I Instrumental Not felt except by a very few under especially favorable conditions.</p>	<p>II Feeble Felt only by a few persons at rest, especially on upper floors of buildings. Delicately suspended objects may swing.</p>	<p>III Slight Felt quite noticeably by people indoors. Many do not recognize it as an earthquake. Vibration similar to the passing of a truck.</p>
<p>IV Moderate Felt indoors by many, outdoors by few during the day. At night some awakened. Walls make cracking sounds. Dishes and windows rattle alarmingly.</p>	<p>V Rather Strong Felt by nearly everyone; many awakened. Some dishes and windows broken. Unstable objects overturned. Clocks may stop.</p>	<p>VI Strong Felt by all. Windows, dishes, glassware broken; books fall off shelves; some heavy furniture moved or overturned. Damage slight.</p>
<p>VII Very Strong Difficult to stand; furniture broken; considerable damage in poorly built or badly designed structures.</p>	<p>VIII Destructive Damage slight only in specially designed structures. Fall of chimneys, factory stacks, columns, monuments, walls. Heavy furniture moved.</p>	<p>IX Ruinous General panic. Damage great in substantial buildings, with partial collapse. Buildings shifted off foundations.</p>
<p>X Disasterous Some well built wooden structures destroyed; most masonry and frame structures destroyed with foundations. Rails bent.</p>	<p>XI Very Disasterous Most buildings collapse. Bridges are destroyed. Large cracks appear in the ground. Underground pipelines are destroyed. Rails badly bent.</p>	<p>XII Catastrophic Total damage. Almost everything is destroyed. The ground moves in waves or ripples. Large amounts of rock may move.</p>

Modified Mercalli Scale

Topographic maps of earthquake areas use the Mercalli scale color code to indicate how far away from the epicenter the earthquake was felt and at what degree of intensity.



Bio Mapping Device

The device measures the wearer's Galvanic Skin Response which is an indicator of emotional arousal in conjunction with their geographical location. This measurement is usually used in scientific research of emotional or physiological arousal. The resulting maps encourage reflection on the complex relationship between humans, their built environment as well as fellow citizens.



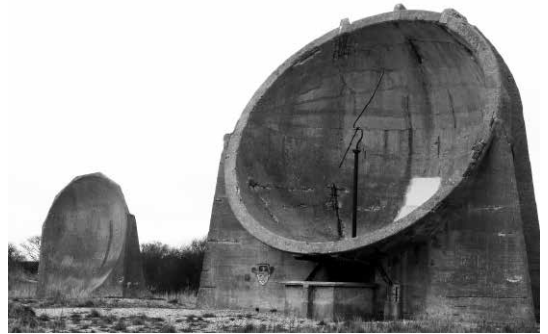
Model Workshop

Learning to build places that imitate places.



Solar Powered Tanning Studio

The first tanning salon that uses solar energy to power the ultra violet light of tanning bulbs.



Acoustic Mirror (Pre-radar Technique)

Built in the 1920s as an experimental early warning system for incoming aircraft. A passive device used to reflect and perhaps focus sound waves. A person had to sit inside of the device and listen.



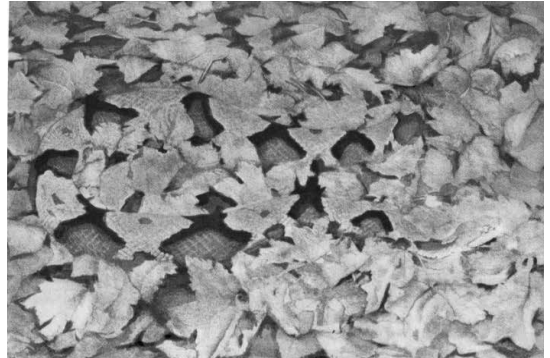
Hypersonic Wind Tunnel

A hypersonic wind tunnel is designed to generate a hypersonic flow field. Used for analysis of flows past ballistic missiles, space vehicles in atmospheric entry, and plasma physics or heat transfer at high temperatures.



Tornado Shelter

A hollow metal or synthetic casing which is being put into the ground in order to serve as a protective shelter in the event of a tornado. Adjusting to natural occurrences.



Concealing-Coloration In The Animal Kingdom

A copperhead snake hides underneath leaves, knowing that it blends in.



Artificial Woods Odor

Aftershave that imitates the smell of timber in order to trigger various associations such as wilderness, outdoor inclinations etc. through smell.



Diorama

Modern museum dioramas may be seen in most major natural history museums. The intention is to present a realistic view of a large scene in a compact space.



Collectors Plate

Collectible that is not intended to serve its initial function as a plate, but rather as a decoration.

The origin of using food related appliances as a surface for photography (especially landscape sceneries) is unknown.



Dust Collection

Several year old dust trapped in snow sediment layers. Snow is a natural dust collector of terrestrial and even extraterrestrial particles.



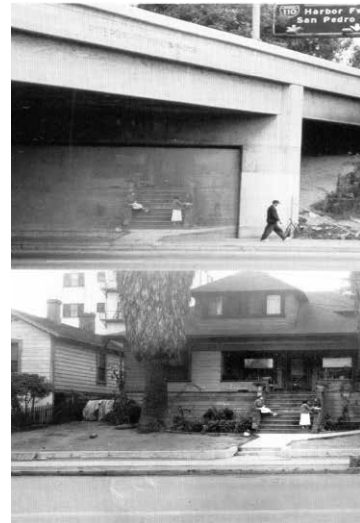
Giant Rock

Several people are known to have lived in a cavity, hollowed out, in and under this giant rock. Popular UFO conventions and events were held here until the 1970s. It has since become a popular rave location, attracting as many as 3,000 partiers.



Edward A. Huebner Brick Collection

Huebner (1851-1936) collected single bricks from properties that were being demolished and painted a picture of the structure that the brick was once a part of.



Digital Photomontage

One home site, two frames.
1999 and 1935. Layering
history. (Building material,
economies, social and private
characteristics of a place.)



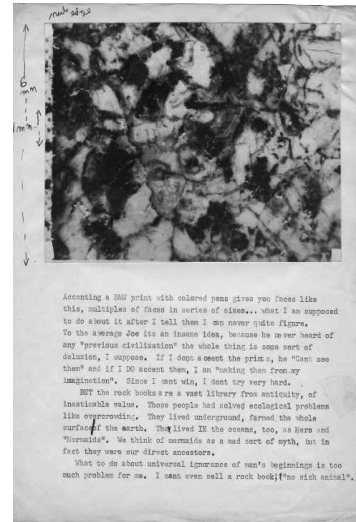
Fresh Kills

The principal dump for New York City's garbage for over 50 years, Fresh Kills is the largest landfill in the world. 2,200 acres and a few hundred feet high, the dump received 14,000 tons per day, or 5 million tons per year, until it was shut down in 2001. It became the disposal site for the remains of the World Trade Center after the terrorist attack of September 11, 2001. It will be redeveloped into a park, eventually



The Receiver Of Wreck Archives

An examination, organization and storage facility for loot, debris, trash, and flotsam / jetsam that has been recovered from the respective territorial waters of a certain country.



Rock Books

Richard S. Shaver (1907-1975) was a Pennsylvania-born author, artist, and theorist of the secrets of human existence. He believed that a super-sophisticated civilization once thrived on Earth, eons ago, and left pictorial records of their history and lore embedded in small stones. Many of these ancient "rock books" survive today, scattered across the face of the world. Rock books provide the sole available record of the true history of intelligent life on earth.



Contaminated Building Material

Over 50 shipments of potentially contaminated fencing material from India were delivered to the U.S. during the summer of 1991. After the matter was investigated, the Nuclear Regulatory Commission concluded that the maximum potential effects on the public were minimal. As a result, no restrictions were placed on the use of the parts.



Frozen Buildings

Often entirely encased in ice due to weather conditions after the event of fire and its extinguishing, frozen buildings temporarily extend their volume and therefore decrease the surrounding space.



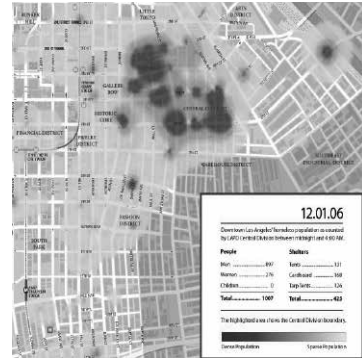
Common Burglar Opportunity During Crime Wave

Taking advantage of natural occurrences; burglars used snow piles as access routes into apartments.



Chasing Coyotes

Chasing wild coyotes in condensed urban areas is a known heuristic method to detect and eventually solve structural weakness in urban systems. By means of following their ways through the city, coyotes can reveal unsafe zones of urban neglect as they prefer such areas.



Mapping Homelessness

Map shows the density of a floating population overlaying the formal urban grid. But at the same time, it reveals real weather: colder temperatures at certain nights makes the number of homeless radically drop or move to sheltered areas.



Law Enforcement Training Architecture (Disaster City)

The scenario grounds of emergency training include mock hazardous material spills, train wrecks, building collapse, fires, and debris strewn landscapes.



Train Bridge Anarchitecture Group

The group as a whole tackled architecture's complicity in capitalist modes of production, using wordplay and found photographs to explore issues related to cities, ways of inhabiting buildings and the role of property.



Travel Report Groups

Travel report authors openly publish their travel experience.

The caption of this German couple having been in the U.S. says: "Around nine we're back in the hotel. Dinner comes from the cool box. Afterwards, at a beer-wine-cosiness, we have a look at the previous holiday pictures on the big flatscreen TV. And we are totally stoked on how good the quality of the TV pictures is."



Laser Tour

New concept of surrogate travel
while exercise.



Places That Resemble Other Planets

While no environment can come close to Mars' extremes in minimum temperature, dryness, low atmospheric pressure and harsh radiation conditions, the Arctic desert is just about as close as scientists can get.



Fulgurites

Fulgurites form when lightning strikes sand or desert soil on a surface that conducts electricity, such as water, at a temperature of at least 1,800 degrees Celsius.

The extreme heat forces the grains of sand to melt and fuse together. The lightning bolt fans out in several directions in an attempt to release its energy.

The length of each “branch” of a fulgurite reflects how quickly each path of the lightning strike lost energy.



Miss Atomic Bomb

Due to the massive use and circulation of this image by the Las Vegas News Bureau, the so called Miss Atomic Bomb largely personified the Atomic Age.



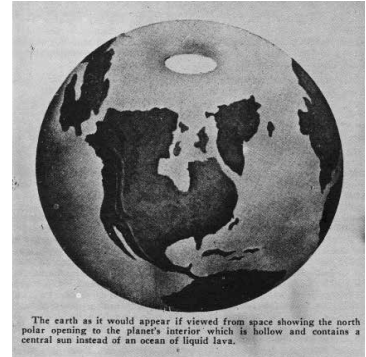
Universal Warning Sign

In 2002 the U.S. Department of Energy brought together engineers, archaeologists, anthropologists and linguists to create a warning sign that would prevent an accidental unearthing of nuclear waste 10,000 years from now. One proposal for instance was to seed an affected area with genetically-altered blue vegetation. One mutated life form acting as a guard over another mutation.



Seismometers

Seismometers are instruments that measure motions of the ground, including those of seismic waves generated by earthquakes, volcanic eruptions, and other seismic sources. Records of seismic waves allow seismologists to map the interior of the Earth, and locate and measure the size of these different sources



The Hollow Earth

The Hollow Earth hypothesis proposes that the planet Earth is either entirely hollow or otherwise contains a substantial interior space. The scientific community has dismissed the notion since at least the late 18th century. The concept of a hollow Earth still recurs in folklore and as the premise for subterranean fiction, a subgenre of adventure fiction. It is also featured in some present-day scientific, pseudoscientific and conspiracy theories.



Micronation: Sealand

Sealand is situated on an abandoned World War II anti-aircraft tower, declared independent by “Prince” Roy in 1967. The country’s initial economic activity consisted largely of selling passports and minted coins - both common practices amongst modern micronations.



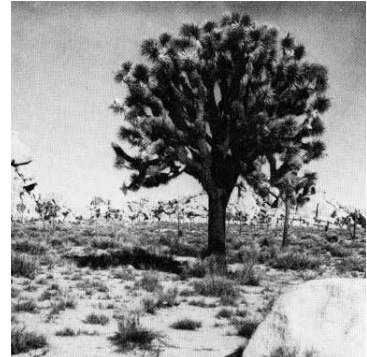
Railway Modelling

Modelers work to create both fantasy worlds and actual, often historic locations.



Sewerisation Monument

An educational full-size replica of a section of a sewer system.



National Monument Joshua Tree

Similar to a National Park except that the President can quickly declare an area of the United States to be a National Monument without the approval of Congress.



Suggested Photo Spots

Sights designated as a “Suggested Photo Spot” were places not normally associated with tourist photography, but that had photogenic qualities nonetheless.



Surface Detecting Map

A GPS camera which can detect certain architectural characteristics in order to create a real time map.



Hand-drawn Boundaries On Top Of A Photographic Representation Of The Earth

Circumscription of
neighborhood and agricultural
property.



**National Historic Civil
Engineering Landmark**

The monument depicts the
initial beginning of the U.S.
Public Land Survey System.
Measuring the nation foot by
foot.



Scale Cube

These cubes are valuable when taking photographs of small objects (typically meteorites). They provide a clear centimeter (in cube form) for scale and may be also used to show the orientation of an object.



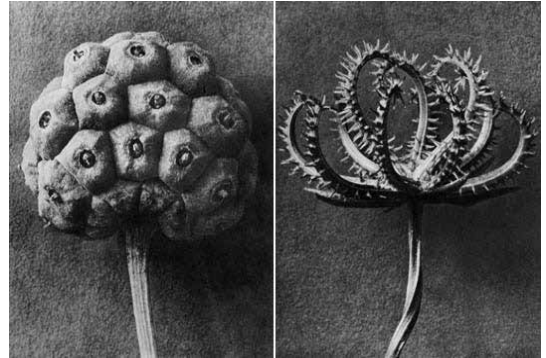
The 100 Feet Rule

This rule was designed to provide a clear distinction between the space of transit and the space of stillness. Less than 100 feet of space between a house and a street would give the impression that cars are driving through backyards.



Railroad Track Sign

Organizes parts of the railroad network with the help of abstract symbols that refer to the landscape of the railroad network.



Ruin Detectors

Plants growing over sites of ancient human habitation have a different chemistry from their neighbors, and therefore can reveal the location of buried ruins.



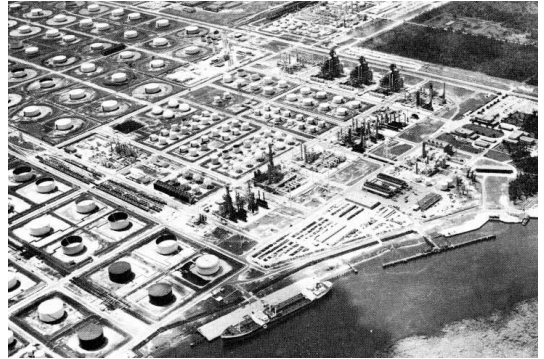
Building Implosion Fireworks

The City of Las Vegas was turning building implosions into public events by adding fireworks and other explosive devices to the controlled destruction of a building. The cost of the fireworks being used for the implosion of the Dunes Hotel was estimated to be \$1 Million.



Floods

The forces of natural occurring floods often drastically rearrange structures of human habitation. After the event of a flood, houses and other objects of human necessity can be found miles away from its original site.



City Service Refinery

Rhythmic coordination
clearly expressing the logic of
the technological process.



Development Forecast Sign

Digital illustration allows residents to visualize not yet realized development.



Blank Billboard / Empty Frame

Popular motive for artists, hobby and professional photographers, mainly because of the apparent image that fills the frame.



Salt Flats

Some say the Salt Flats are the natural version of a white canvas that has been flipped over.



Welcome Sign

It affords an opportunity to advertise features within the region to people who are entering it.



Alternative Tourism
Pre-constructed Obstacle
Bypass

A physical activity, a cultural exchange or interaction and engagement with nature.



Bench (Benching)

Next to the famous, more spectacular scenic overlook, the typical bench is often facing a mundane landscape that is considered rather average. Still, the typical bench outnumbers the scenic overlook easily.

Devices And Materials For Terrestrial Perception and Utilization

Compiled by // Max Stocklosa

Published by // AKV Berlin

Co-published by // Stratagrids

Edited by // Katherine Grau

Layout Adjustments // Florian Goldmann

Font Advisor // Lina Grumm

Printed at // Mos Luczak Printing House, Poland

Dedicated to // Anna Szaflarski, Stefan Reuter

This book has been generously supported by //
The Center For Land Use Interpretation



No rights reserved on any images or texts, including the rights of reproduction in whole in part or in any form. Images and texts are copyright of the original copyright holders.

All material is compiled from sources believed to be reliable, but published without any responsibility for errors or omissions. As most of the accounts herein are not of a first hand nature there is no guarantee of authenticity for the information given in this book.

AKV Berlin // Board of Trustees

Anna M. Szaflarski

Kevin Kemter

Max Stocklosa

Vincent Grunwald

Stratagrids // Board of Trustees

Daniel Wolter

Florian Goldmann

Max Stocklosa



SG 003 / 2012

akvberlin.com

stratagrids.wordpress.com

